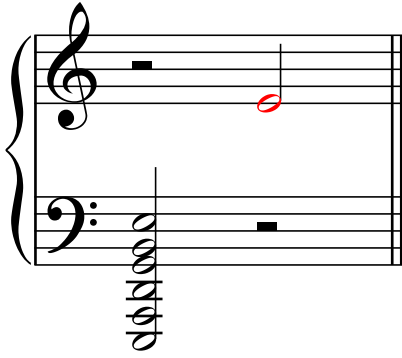


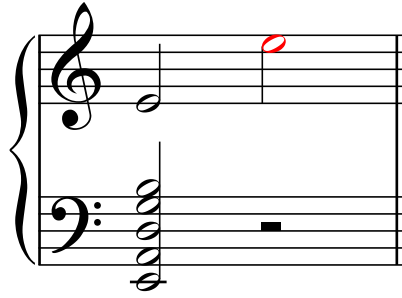
Instrument Ranges

Open Strings and Instrument Ranges

Bass



Guitar



Requinto



Mandolin



Mandola



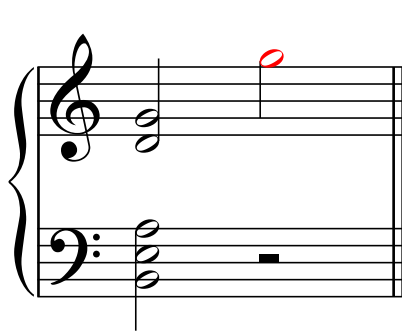
**Strumstick
in G**



Charango



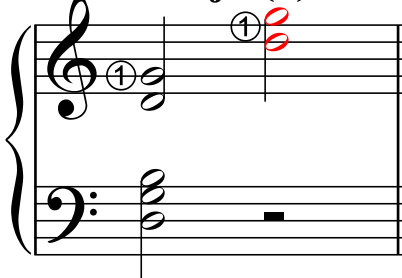
Cuatro



Pipa



Banjo (5)



Tenor Banjo



Tambora



**Baritone
Ukulele**

Musical notation for Baritone Ukulele. The treble clef staff contains a quarter note G4, a quarter note A4, and a quarter note B4, with a red fingering '1' above the B4 note. The bass clef staff contains a whole note chord consisting of G2, B1, and D2.

**Tenor
Ukulele**

Musical notation for Tenor Ukulele. The treble clef staff contains a quarter note G4, a quarter note A4, and a quarter note B4, with red fingering '4' above G4 and '1' above A4. The bass clef staff contains a whole note chord consisting of G2, B1, and D2.

**Soprano
Ukulele**

Musical notation for Soprano Ukulele. The treble clef staff contains a quarter note G4, a quarter note A4, and a quarter note B4, with red fingering '4' above G4 and '1' above A4. The bass clef staff contains a whole note chord consisting of G2, B1, and D2.

**Saz
Baglama**

Musical notation for Saz Baglama. The treble clef staff contains a whole rest followed by a quarter note B4 with a red fingering '1' above it. The bass clef staff contains a whole note chord consisting of G2, B1, and D2.

**Saz
Cura**

Musical notation for Saz Cura. The treble clef staff contains a quarter note G4 with a red fingering '1' above it, followed by a quarter note A4 with a red fingering '3' above it, and a quarter note B4 with a red fingering '1' above it. The bass clef staff contains a whole note chord consisting of G2, B1, and D2.

Empty musical notation for Saz Cura, consisting of two blank staves (treble and bass clef).

Gu Chen

Musical notation for Gu Chen. The treble clef staff contains a whole rest followed by a quarter note G4 with a red fingering '2' above it. The bass clef staff contains a whole note chord consisting of G2, B1, and D2.

Empty musical notation for Gu Chen, consisting of two blank staves (treble and bass clef).

Empty musical notation for Gu Chen, consisting of two blank staves (treble and bass clef).

Empty musical notation for Gu Chen, consisting of two blank staves (treble and bass clef).

Empty musical notation for Gu Chen, consisting of two blank staves (treble and bass clef).

Empty musical notation for Gu Chen, consisting of two blank staves (treble and bass clef).

Kora

Musical notation for Kora. The treble clef staff contains a whole rest followed by a quarter note G4 with a red fingering '2' above it. The bass clef staff contains a whole note chord consisting of G2, B1, and D2.

Empty musical notation for Kora, consisting of two blank staves (treble and bass clef).

Empty musical notation for Kora, consisting of two blank staves (treble and bass clef).