

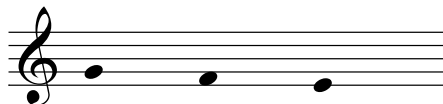
Improvisation samples (unworked): Melodic

Initial

0 mc ms-3



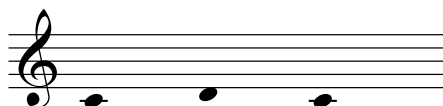
0 mc ms-6



0 mc ms-7



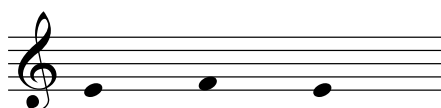
0 mc ms-8



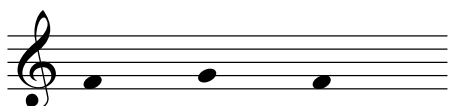
0 mc ms-9



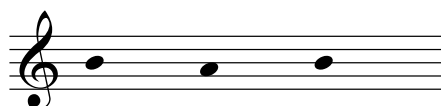
0 mc ms-10



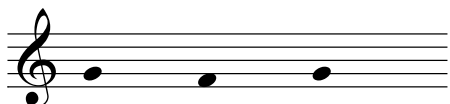
0 mc ms-11



0 mc ms-13

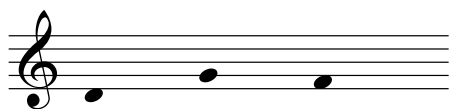


0 mc ms-14

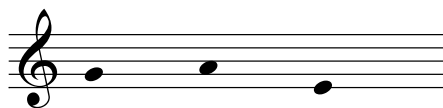


Grade 1

1 mc ms-2



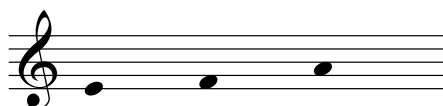
1 mc ms-4



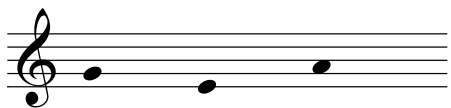
1 mc ms-5



1 mc ms-6

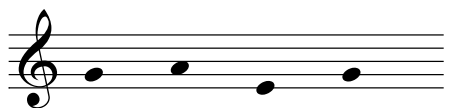


1 mc ms-10



Grade 2

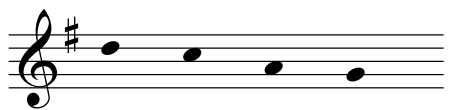
2 mc ms-3



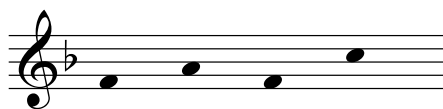
2 mc ms-6



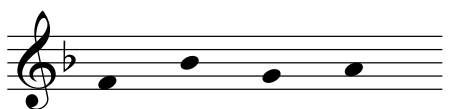
2 mc ms-7



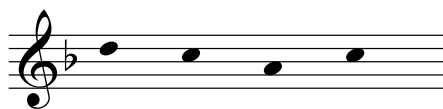
2 mc ms-8



2 mc ms-9

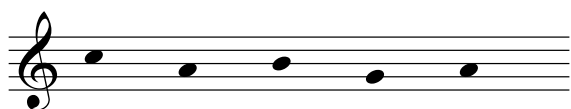


2 mc ms-10

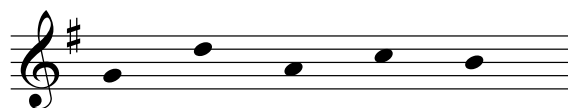


Grade 3

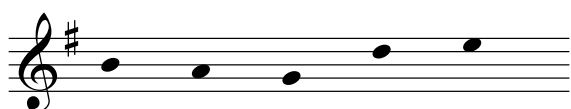
3 mc ms-3



3 mc ms-5



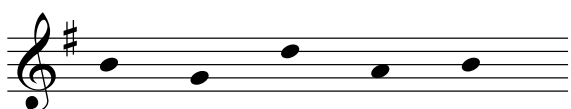
3 mc ms-6



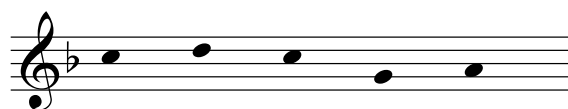
3 mc ms-7



3 mc ms-8



3 mc ms-10



Grade 4

4 mc ms-2



4 mc ms-3



4 mc ms-4



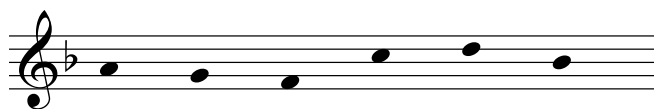
4 mc ms-5



4 mc ms-8



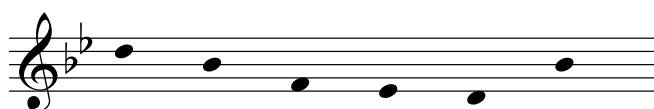
4 mc ms-9



4 mc ms-11

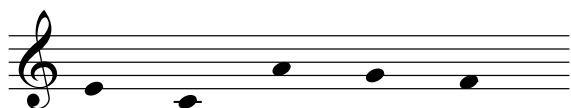


4 mc ms-13

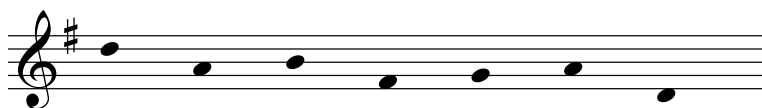


Grade 5

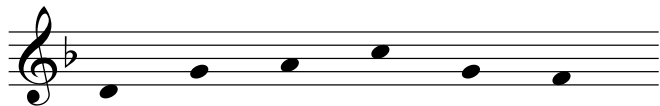
5 mc ms-2



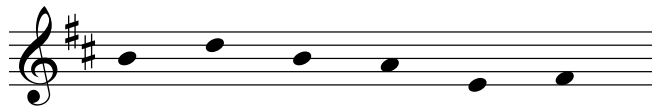
5 mc ms-3



5 mc ms-6



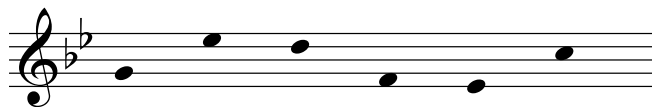
5 mc ms-8



5 mc ms-9

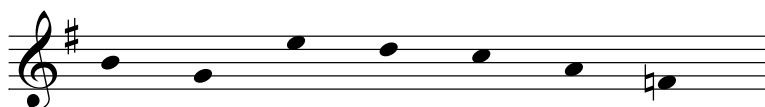


5 mc ms-10

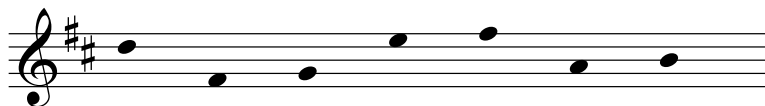


Grade 6

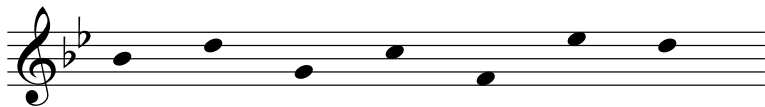
6 mc ms-2



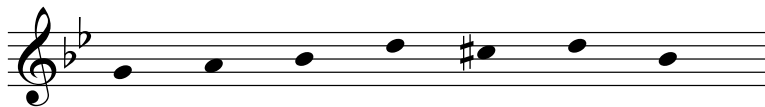
6 mc ms-4



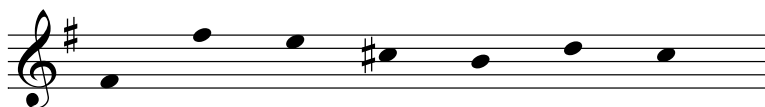
6 mc ms-6



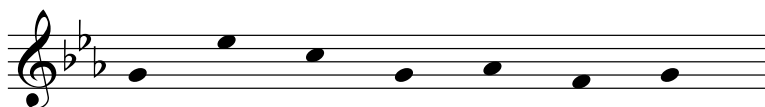
6 mc ms-7



6 mc ms-8

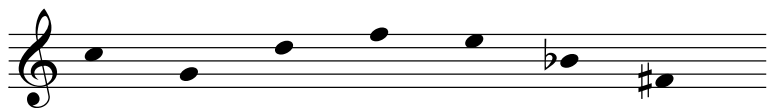


6 mc ms-10



Grade 7

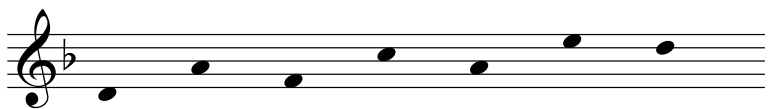
7 mc ms-2



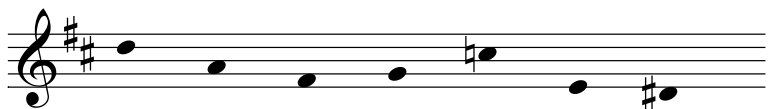
7 mc ms-4



7 mc ms-5



7 mc ms-6

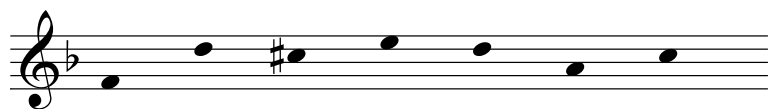


7 mc ms-8

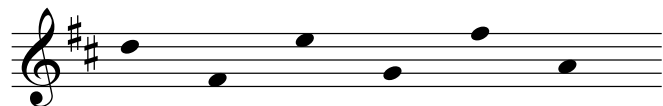


Grade 8

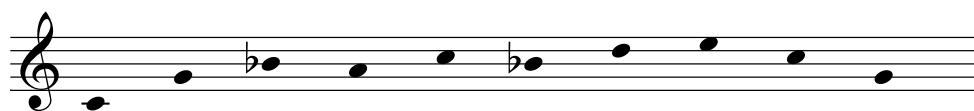
8 mc ms-2



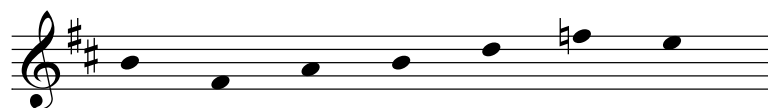
8 mc ms-3



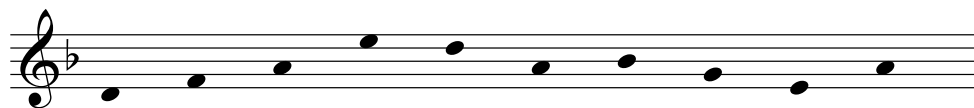
8 mc ms-3 (vocal)



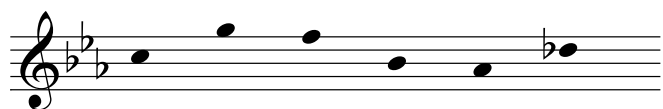
8 mc ms-4



8 mc ms-4 (vocal)



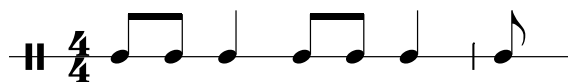
8 mc ms-8



Improvisation samples (unworked): Rhythmic

Grade 1

1 mc rs-1



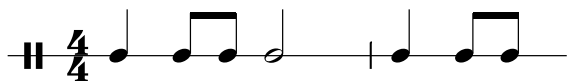
1 mc rs-2



1 mc rs-3



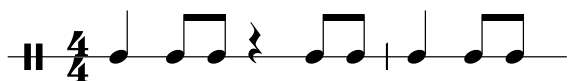
1 mc rs-5



1 mc rs-6



1 mc rs-7



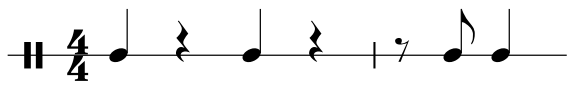
1 mc rs-8



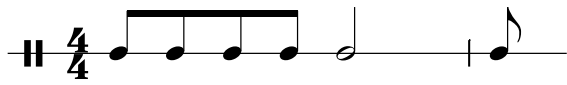
1 mc rs-9



1 mc rs-10

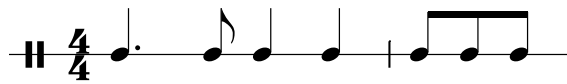


1 mc rs-11



Grade 2

2 mc rs-2



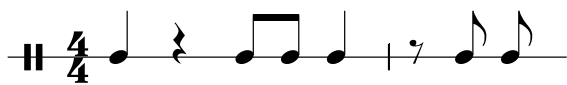
2 mc rs-3



2 mc rs-4



2 mc rs-5



2 mc rs-6



2 mc rs-7



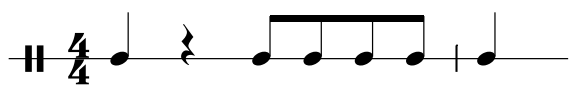
2 mc rs-8



2 mc rs-9



2 mc rs-10

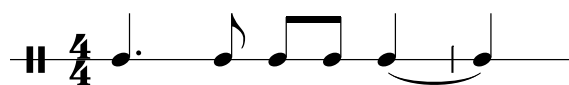


2 mc rs-11



Grade 3

3 mc rs-1



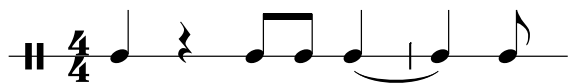
3 mc rs-2



3 mc rs-3



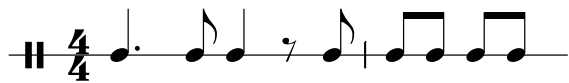
3 mc rs-4



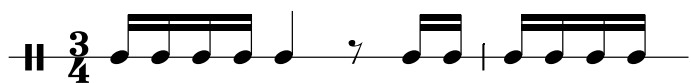
3 mc rs-5



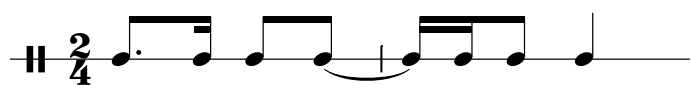
3 mc rs-6



4 mc rs-4



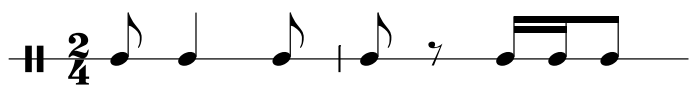
4 mc rs-5



4 mc rs-6



4 mc rs-7



4 mc rs-9



4 mc rs-10



4 mc rs-11



Grade 5

5 mc rs-2



5 mc rs-3



5 mc rs-4



5 mc rs-5



5 mc rs-6



5 mc rs-7



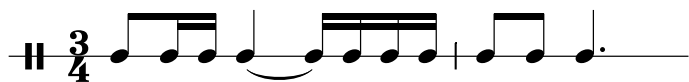
5 mc rs-8



5 mc rs-9



5 mc rs-10



5 mc rs-11

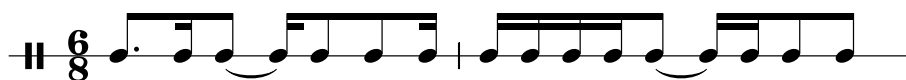


Grade 6

6 mc rs-1



6 mc rs-2



6 mc rs-3



6 mc rs-4



6 mc rs-5



6 mc rs-6



6 mc rs-7



6 mc rs-8



6 mc rs-9



Grade 8

8 mc rs-1



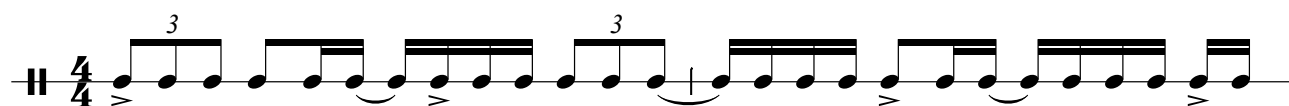
8 mc rs-2



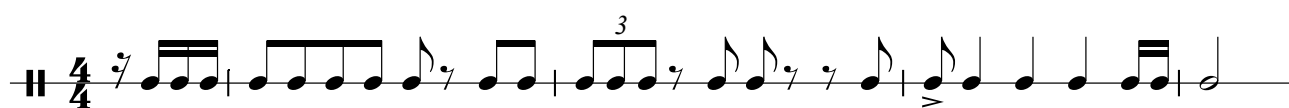
8 mc rs-4



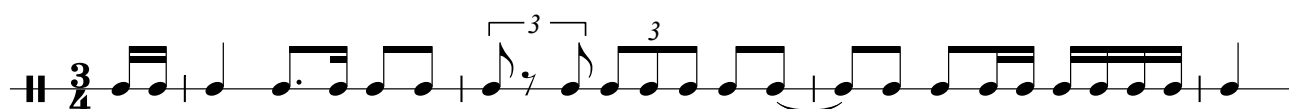
8 mc rs-5



8 mc rs-7



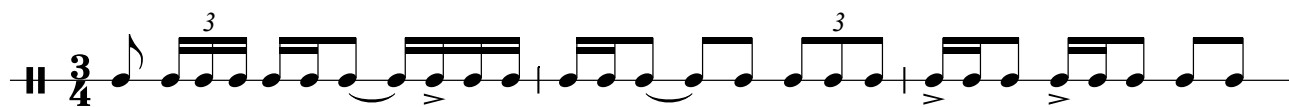
8 mc rs-8



8 mc rs-9



8 mc rs-10



8 mc rs-11



8 mc rs-12



Improvisation samples (unworked): Chordal

Initial

0 mc cs-2

Musical notation for the Initial sample (0 mc cs-2). It consists of a grand staff with two staves. The top staff is in treble clef and the bottom staff is in bass clef. The piece is in 4/4 time. The first measure has a G chord in the treble and a C note in the bass. The second measure has a G chord in the treble and a C note in the bass. The third measure has a C chord in the treble and a C note in the bass. The fourth measure has a C chord in the treble and a C note in the bass. The piece ends with a double bar line.

Grade 1

1 mc cs-2

Musical notation for the Grade 1 sample (1 mc cs-2). It consists of a grand staff with two staves. The top staff is in treble clef and the bottom staff is in bass clef. The piece is in 4/4 time. The first measure has a C chord in the treble and a C note in the bass. The second measure has a C chord in the treble and a C note in the bass. The third measure has a G chord in the treble and a C note in the bass. The fourth measure has a C chord in the treble and a C note in the bass. The piece ends with a double bar line.

1 mc cs-3

Musical notation for the Grade 1 sample (1 mc cs-3). It consists of a grand staff with two staves. The top staff is in treble clef and the bottom staff is in bass clef. The piece is in 4/4 time. The first measure has a G chord in the treble and a C note in the bass. The second measure has a C chord in the treble and a C note in the bass. The third measure has a G chord in the treble and a C note in the bass. The fourth measure has a C chord in the treble and a C note in the bass. The piece ends with a double bar line.

1 mc cs-4

Musical notation for the Grade 1 sample (1 mc cs-4). It consists of a grand staff with two staves. The top staff is in treble clef and the bottom staff is in bass clef. The piece is in 4/4 time. The first measure has a C chord in the treble and a C note in the bass. The second measure has a G chord in the treble and a C note in the bass. The third measure has a G chord in the treble and a C note in the bass. The fourth measure has a C chord in the treble and a C note in the bass. The piece ends with a double bar line.

Grade 2

2 mc cs-2

C C/E F G *last time* C

2 mc cs-3

G C F G *last time* C

2 mc cs-4

F C G C

2 mc cs-5

F G F C

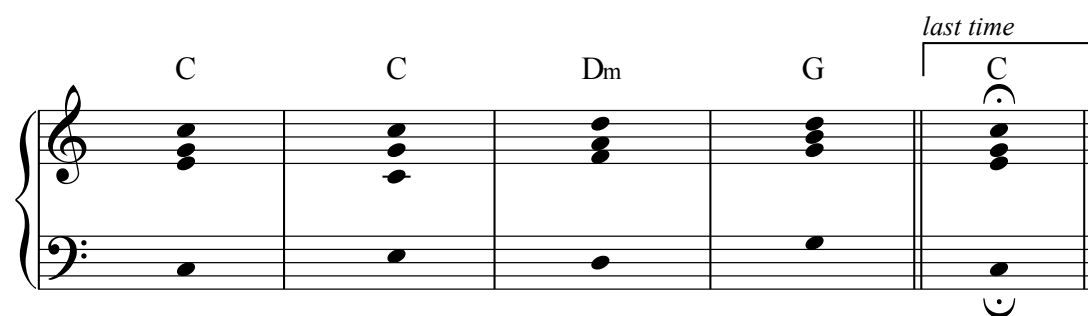
2 mc cs-6

F C F C

Grade 3

3 mc cs-2

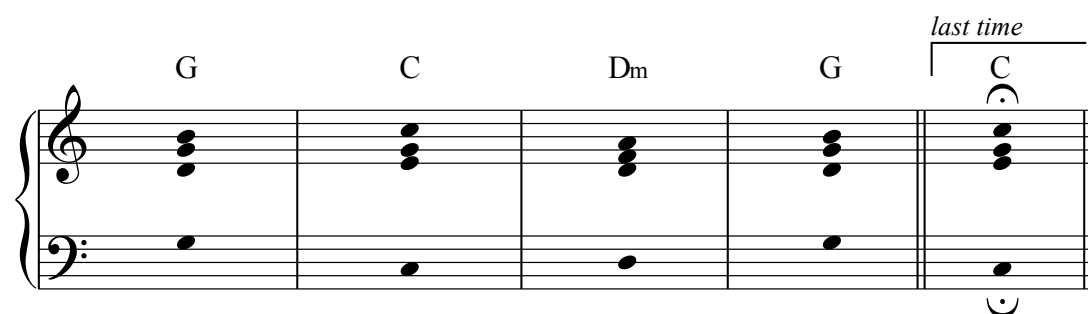
C C Dm G *last time* C



Musical notation for 3 mc cs-2. It consists of a grand staff with a treble clef on the upper staff and a bass clef on the lower staff. The piece is in 3/4 time. The first four measures contain chords: C (C4, E4, G4), C (C4, E4, G4), Dm (D4, F4, A4), and G (G4, B4, D5). The fifth measure contains a C chord (C4, E4, G4) with a fermata over it, and the word "last time" is written above the staff. The bass line consists of quarter notes: C3, C3, D3, E3, and C3.

3 mc cs-3

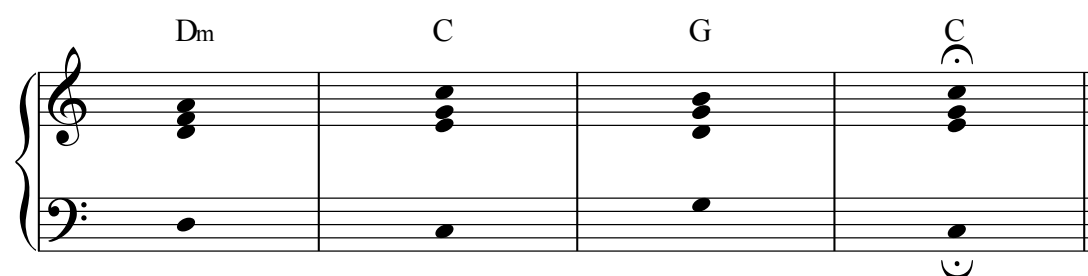
G C Dm G *last time* C



Musical notation for 3 mc cs-3. It consists of a grand staff with a treble clef on the upper staff and a bass clef on the lower staff. The piece is in 3/4 time. The first four measures contain chords: G (G4, B4, D5), C (C4, E4, G4), Dm (D4, F4, A4), and G (G4, B4, D5). The fifth measure contains a C chord (C4, E4, G4) with a fermata over it, and the word "last time" is written above the staff. The bass line consists of quarter notes: G2, C3, D3, E3, and C3.

3 mc cs-4

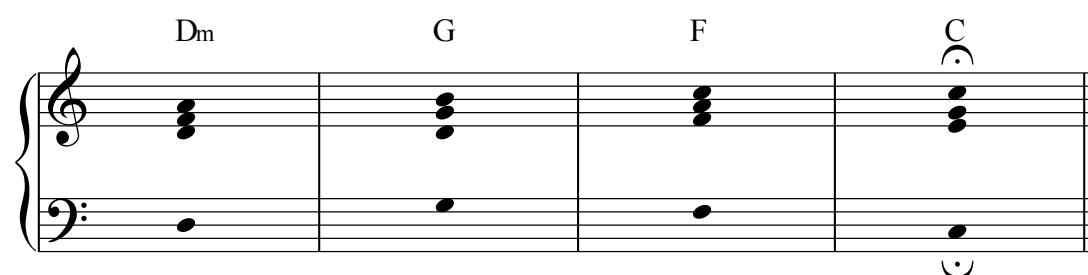
Dm C G C



Musical notation for 3 mc cs-4. It consists of a grand staff with a treble clef on the upper staff and a bass clef on the lower staff. The piece is in 3/4 time. The first four measures contain chords: Dm (D4, F4, A4), C (C4, E4, G4), G (G4, B4, D5), and C (C4, E4, G4). The bass line consists of quarter notes: D3, C3, D3, E3, and C3.

3 mc cs-5

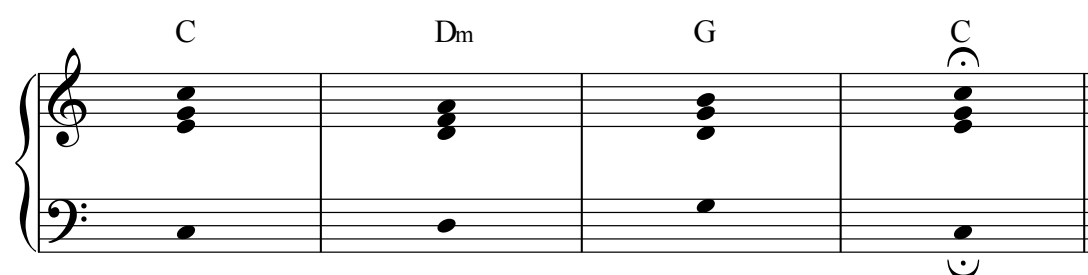
Dm G F C



Musical notation for 3 mc cs-5. It consists of a grand staff with a treble clef on the upper staff and a bass clef on the lower staff. The piece is in 3/4 time. The first four measures contain chords: Dm (D4, F4, A4), G (G4, B4, D5), F (F4, A4, C5), and C (C4, E4, G4). The bass line consists of quarter notes: D3, C3, D3, E3, and C3.

3 mc cs-6

C Dm G C

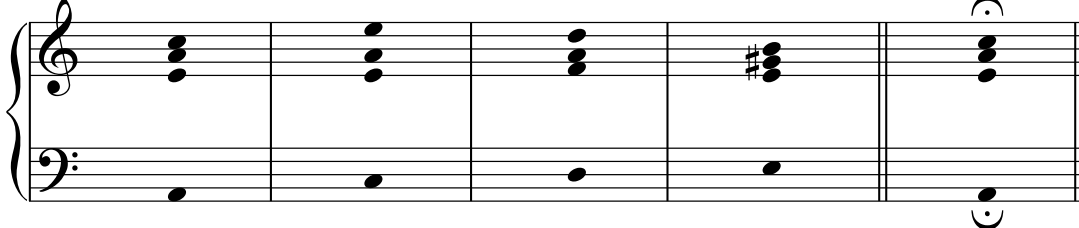


Musical notation for 3 mc cs-6. It consists of a grand staff with a treble clef on the upper staff and a bass clef on the lower staff. The piece is in 3/4 time. The first four measures contain chords: C (C4, E4, G4), Dm (D4, F4, A4), G (G4, B4, D5), and C (C4, E4, G4). The bass line consists of quarter notes: C3, C3, D3, E3, and C3.

Grade 4

4 mc cs-2

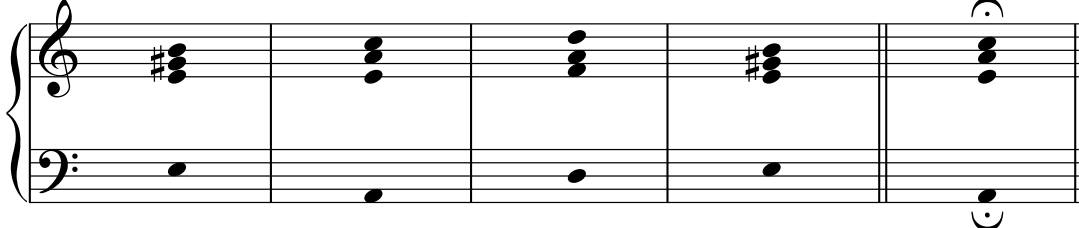
Am Am Dm E *last time* Am



Musical notation for 4 mc cs-2. The piece is in 4/4 time and consists of five measures. The first four measures are: Am (A2, C3, E3), Am (A2, C3, E3), Dm (D2, F2, A2), and E (E2, G#2, B2). The fifth measure is a repeat of Am (A2, C3, E3) with a fermata over the chord. The bass line consists of single notes: A2, A2, D2, D2, and A2.

4 mc cs-3

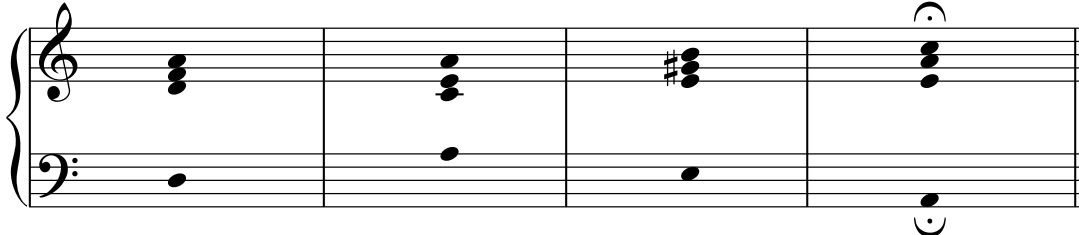
E Am Dm E *last time* Am



Musical notation for 4 mc cs-3. The piece is in 4/4 time and consists of five measures. The first four measures are: E (E2, G#2, B2), Am (A2, C3, E3), Dm (D2, F2, A2), and E (E2, G#2, B2). The fifth measure is a repeat of Am (A2, C3, E3) with a fermata over the chord. The bass line consists of single notes: A2, A2, D2, D2, and A2.

4 mc cs-4

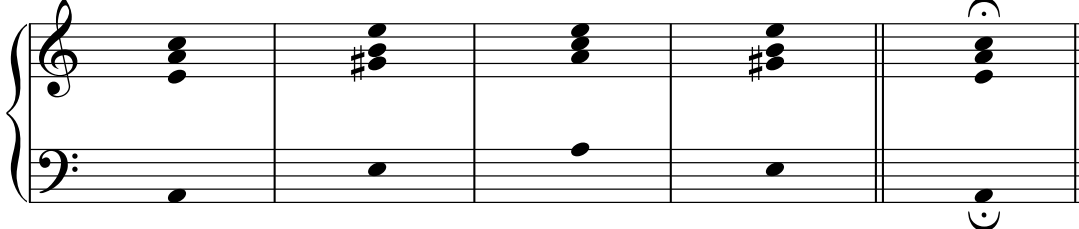
Dm Am E Am



Musical notation for 4 mc cs-4. The piece is in 4/4 time and consists of four measures. The first three measures are: Dm (D2, F2, A2), Am (A2, C3, E3), and E (E2, G#2, B2). The fourth measure is a repeat of Am (A2, C3, E3) with a fermata over the chord. The bass line consists of single notes: A2, A2, D2, and A2.

4 mc cs-5

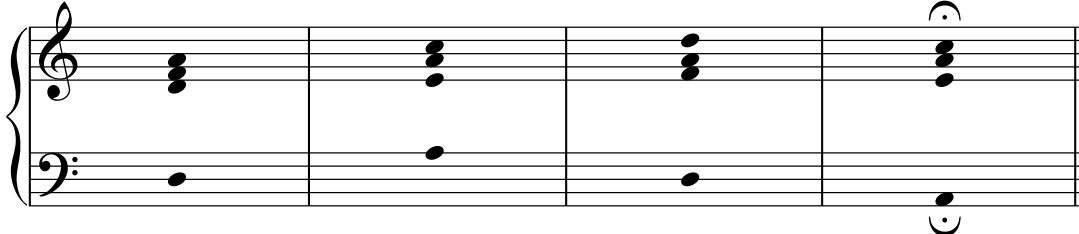
Am E Am E *last time* Am



Musical notation for 4 mc cs-5. The piece is in 4/4 time and consists of five measures. The first four measures are: Am (A2, C3, E3), E (E2, G#2, B2), Am (A2, C3, E3), and E (E2, G#2, B2). The fifth measure is a repeat of Am (A2, C3, E3) with a fermata over the chord. The bass line consists of single notes: A2, A2, D2, D2, and A2.

4 mc cs-6

Dm Am Dm Am

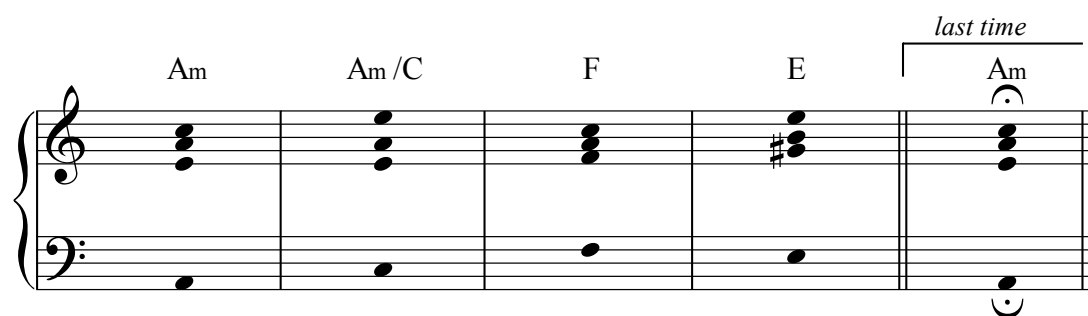


Musical notation for 4 mc cs-6. The piece is in 4/4 time and consists of four measures. The first three measures are: Dm (D2, F2, A2), Am (A2, C3, E3), and Dm (D2, F2, A2). The fourth measure is a repeat of Am (A2, C3, E3) with a fermata over the chord. The bass line consists of single notes: A2, A2, D2, and A2.

Grade 5

5 mc cs-2

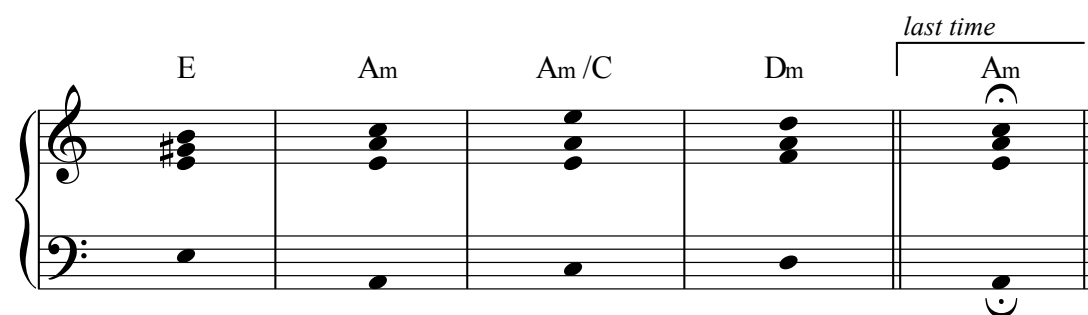
Am Am/C F E *last time* Am



Musical notation for 5 mc cs-2. The piece is in G major and 4/4 time. The first four measures contain chords Am, Am/C, F, and E. The fifth measure contains Am, which is bracketed and labeled "last time". The bass line consists of single notes: G, A, B, C, and G.

5 mc cs-3

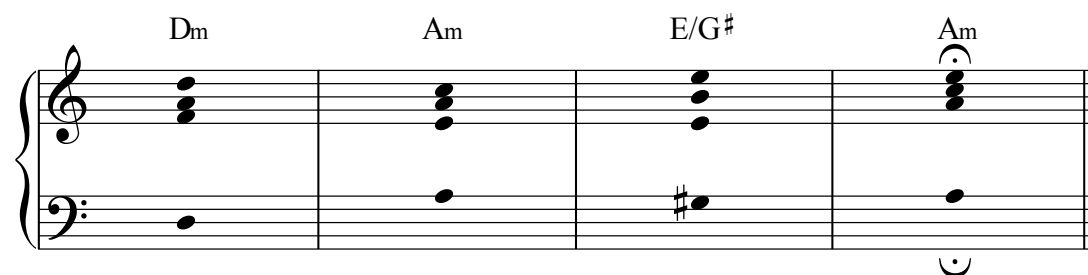
E Am Am/C Dm *last time* Am



Musical notation for 5 mc cs-3. The piece is in G major and 4/4 time. The first four measures contain chords E, Am, Am/C, and Dm. The fifth measure contains Am, which is bracketed and labeled "last time". The bass line consists of single notes: G, A, B, C, and G.

5 mc cs-4

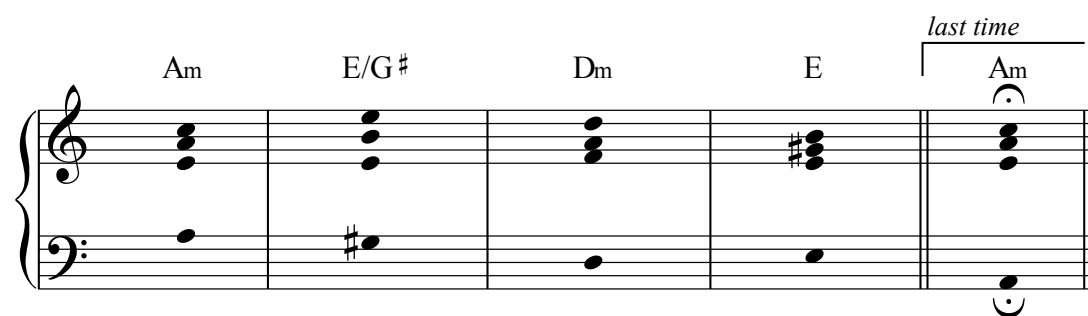
Dm Am E/G# Am



Musical notation for 5 mc cs-4. The piece is in G major and 4/4 time. The first four measures contain chords Dm, Am, E/G#, and Am. The bass line consists of single notes: G, A, B, and G.

5 mc cs-5

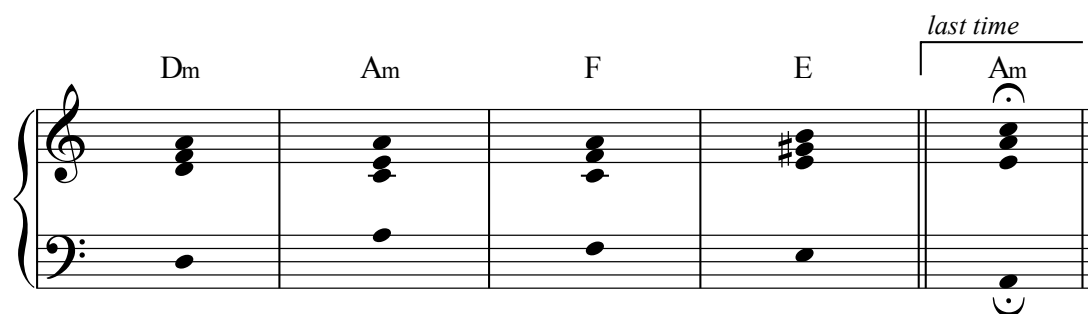
Am E/G# Dm E *last time* Am



Musical notation for 5 mc cs-5. The piece is in G major and 4/4 time. The first four measures contain chords Am, E/G#, Dm, and E. The fifth measure contains Am, which is bracketed and labeled "last time". The bass line consists of single notes: G, A, B, C, and G.

5 mc cs-6

Dm Am F E *last time* Am



Musical notation for 5 mc cs-6. The piece is in G major and 4/4 time. The first four measures contain chords Dm, Am, F, and E. The fifth measure contains Am, which is bracketed and labeled "last time". The bass line consists of single notes: G, A, B, C, and G.

Grade 6

6 mc cs-2

C C/E Dm⁷ G⁷ *last time* C

6 mc cs-3

G⁷ C C/E F *last time* C

6 mc cs-4

F C Dm⁷ C

6 mc cs-5

C⁷ G/B G C

6 mc cs-6

F C/E Dm G⁷ *last time* C

6 mc cs-7

Musical notation for 6 mc cs-7. The piece is in C major and 6/8 time. It consists of four measures. The first measure has a C chord in the treble and a C bass note in the bass. The second measure has an Am7 chord in the treble and an A bass note. The third measure has an F chord in the treble and an F bass note. The fourth measure has a C chord in the treble and a C bass note. A fermata is placed over the final C chord.

6 mc cs-8

Musical notation for 6 mc cs-8. The piece is in C major and 6/8 time. It consists of five measures. The first measure has a Dm7 chord in the treble and a D bass note. The second measure has a G7 chord in the treble and a G bass note. The third measure has a C chord in the treble and a C bass note. The fourth measure has a G7 chord in the treble and a G bass note. The fifth measure has a C chord in the treble and a C bass note, with a bracket above it labeled "last time" and a fermata over the final C chord.

6 mc cs-9

Musical notation for 6 mc cs-9. The piece is in C major and 6/8 time. It consists of five measures. The first measure has a C chord in the treble and a C bass note. The second measure has a C7/E chord in the treble and an E bass note. The third measure has an F chord in the treble and an F bass note. The fourth measure has a G chord in the treble and a G bass note. The fifth measure has a C chord in the treble and a C bass note, with a bracket above it labeled "last time" and a fermata over the final C chord.

6 mc cs-10

Musical notation for 6 mc cs-10. The piece is in C major and 6/8 time. It consists of four measures. The first measure has a C chord in the treble and a C bass note. The second measure has a C7/E chord in the treble and an E bass note. The third measure has a G7 chord in the treble and a G bass note. The fourth measure has a C chord in the treble and a C bass note. A fermata is placed over the final C chord.

6 mc cs-11

Musical notation for 6 mc cs-11. The piece is in C major and 6/8 time. It consists of four measures. The first measure has an F7 chord in the treble and an F bass note. The second measure has a C chord in the treble and a C bass note. The third measure has a G7 chord in the treble and a G bass note. The fourth measure has a C chord in the treble and a C bass note. A fermata is placed over the final C chord.

6 mc cs-12

Musical notation for exercise 6 mc cs-12. The piece is in 6/8 time and consists of five measures. The first four measures are: F7, C, C/E, and G7. The fifth measure is marked with a bracket and the text "last time" above it, and contains a C chord. The bass line consists of single notes: F, C, E, G, and C. The treble line shows chord voicings for each measure.

6 mc cs-13

Musical notation for exercise 6 mc cs-13. The piece is in 6/8 time and consists of five measures. The first four measures are: G7/B, C, C/E, and G. The fifth measure is marked with a bracket and the text "last time" above it, and contains a C chord. The bass line consists of single notes: B, C, E, G, and C. The treble line shows chord voicings for each measure.

6 mc cs-14

Musical notation for exercise 6 mc cs-14. The piece is in 6/8 time and consists of four measures. The first three measures are: Dm7, G, and G7/B. The fourth measure is marked with a bracket and the text "last time" above it, and contains a C chord. The bass line consists of single notes: F, C, E, and C. The treble line shows chord voicings for each measure.

Grade 7

7 mc cs-2

Musical notation for 7 mc cs-2. The piece is in A minor. The chord progression is: Am, E7, F, Dm, E, E7, Am. The final Am chord is marked "last time".

7 mc cs-3

Musical notation for 7 mc cs-3. The piece is in G major. The chord progression is: G, B7, C, Am, Am7/D, D7, G. The final G chord is marked "last time".

7 mc cs-4

Musical notation for 7 mc cs-4. The piece is in G major. The chord progression is: Em, B7, B7/D#, Em, B7, Em. The final Em chord is marked "last time".

7 mc cs-5

Musical notation for 7 mc cs-5. The piece is in C major. The chord progression is: C7, G/B, G, C. The final C chord is marked "last time".

7 mc cs-6

Bm A⁷ D D/F# C#⁷/G# F#⁷ *last time* Bm

7 mc cs-7

A E⁷/G# F#m D/F# C#⁷/E# E⁷ *last time* A

7 mc cs-8

F#m F⁷ Bm C#⁷ F#m

7 mc cs-9

F F⁶ Gm⁷ C⁷ Bb/F F

7 mc cs-10

Dm Gm A Edim A⁷ Dm

7 mc cs-11

Musical notation for 7 mc cs-11. The piece is in B-flat major (two flats). The chord progression is: B \flat , C 7 /B \flat , F/A, Dm, Gm, C 7 , and B \flat (marked "last time"). The notation shows a grand staff with treble and bass clefs. The bass line consists of single notes: B \flat , B \flat , A, G \flat , F, E, and B \flat . The treble line shows chord voicings for each measure.

7 mc cs-12

Musical notation for 7 mc cs-12. The piece is in B-flat major (two flats). The chord progression is: Gm, D 7 /A, Gm/B \flat , Cm, D 7 , A \dim^7 , D 7 , and Gm (marked "last time"). The notation shows a grand staff with treble and bass clefs. The bass line consists of single notes: G \flat , A, B \flat , C \flat , D \flat , E \flat , and G \flat . The treble line shows chord voicings for each measure.

7 mc cs-13

Musical notation for 7 mc cs-13. The piece is in E-flat major (three flats). The chord progression is: E \flat , A \flat , E \flat , Cm 7 , F 7 , B \flat^7 , and E \flat (marked "last time"). The notation shows a grand staff with treble and bass clefs. The bass line consists of single notes: E \flat , A \flat , E \flat , C \flat , F \flat , B \flat , and E \flat . The treble line shows chord voicings for each measure.

7 mc cs-14

Musical notation for 7 mc cs-14. The piece is in B-flat major (two flats). The chord progression is: Cm, Cm/E \flat , Fm, Fm/A \flat , D \dim^7 , G 7 , and Cm. The notation shows a grand staff with treble and bass clefs. The bass line consists of single notes: C \flat , E \flat , F \flat , A \flat , D \flat , G \flat , and C \flat . The treble line shows chord voicings for each measure.

7 mc cs-15

Musical notation for 7 mc cs-15. The piece is in C major (no sharps or flats). The chord progression is: C, Em, Dm, Dm/F, Dm 7 /G, G 7 , and C (marked "last time"). The notation shows a grand staff with treble and bass clefs. The bass line consists of single notes: C, G \flat , F \flat , E \flat , D \flat , C, and C. The treble line shows chord voicings for each measure.

7 mc cs-16

Am F/A E/G# Am F Dm E⁷ Am

7 mc cs-17

B^b F/A F⁷ B^b C⁷ F/A C⁷ F

7 mc cs-18

Dm Dm/F E^{dim} A⁷ Dm Dm/F Gm⁷ A⁷ *last time* Dm

Grade 8

8 mc cs-1

C C7/B \flat F/A Fm/A \flat C/G D $^{\flat}$ /F \sharp Dm 7 /G G 7 *last time* C

Musical notation for 8 mc cs-1. The piece is in C major. The chord progression is: C, C7/B \flat , F/A, Fm/A \flat , C/G, D $^{\flat}$ /F \sharp , Dm 7 /G, G 7 , and a final C chord marked "last time". The notation shows the treble and bass clefs with chord voicings.

8 mc cs-2

Am E 7 F E 7 Am Dm E 7 _{sus 4} E 7 *last time* Am

Musical notation for 8 mc cs-2. The piece is in C major. The chord progression is: Am, E 7 , F, E 7 , Am, Dm, E 7 _{sus 4} , E 7 , and a final Am chord marked "last time". The notation shows the treble and bass clefs with chord voicings.

8 mc cs-3

G B 7 C Am 7 D 7 *last time* G

Musical notation for 8 mc cs-3. The piece is in G major. The chord progression is: G, B 7 , C, Am 7 , D 7 , and a final G chord marked "last time". The notation shows the treble and bass clefs with chord voicings.

8 mc cs-4

Em Em/G B 7 B 7 /D \sharp Em B 7 *last time* Em

Musical notation for 8 mc cs-4. The piece is in E minor. The chord progression is: Em, Em/G, B 7 , B 7 /D \sharp , Em, B 7 , and a final Em chord marked "last time". The notation shows the treble and bass clefs with chord voicings.

8 mc cs-5

D F# Bm Em Em⁷/G A⁷ *last time* D

8 mc cs-6

Bm B⁷ Em F⁷ Bm Em C⁷ F⁷ *last time* Bm

8 mc cs-7

A Adim⁷ E⁹/G# E/G# F#m D/F# C^{b9}/E# C#/E# *last time* A

8 mc cs-8

F#m F⁷ Bm C# F#sus⁴ F⁷

8 mc cs-9

F F⁶ Fma⁷ Gm⁷ C⁷ *last time* F

8 mc cs-12

Gm D7/A Gm/B \flat G7/B \sharp Cm D7 Gm D7 *last time* Gm

8 mc cs-13

E \flat A \flat F7 B \flat 7 E \flat Cm7 A \flat ma7/F B \flat 7 *last time* E \flat

8 mc cs-14

Cmsus² Cm F7sus⁴ Fm7 D7 G7 Csus⁴ Cm

8 mc cs-15

C Caug F Dm7 G7 *last time* C

8 mc cs-16

Am F/A B7 Em Am F/A B7 E7 *last time* Am

8 mc cs-17

Musical score for 8 mc cs-17. The score is in G major (one sharp) and 4/4 time. It consists of two staves: a treble clef staff and a bass clef staff. The treble staff contains chords for each measure, and the bass staff contains single notes. The chords are: B \flat , F/A, A 7 , Dm, B \flat dim 7 , F/A, C 7 , and F. The final measure has a fermata over the F chord.

8 mc cs-18

Musical score for 8 mc cs-18. The score is in G major (one sharp) and 4/4 time. It consists of two staves: a treble clef staff and a bass clef staff. The treble staff contains chords for each measure, and the bass staff contains single notes. The chords are: Dm, Dm/F, Em $^7(b^5)$, A 7 , F, F/A, B \flat , C 7 , and Dm. The final measure has a fermata over the Dm chord and is marked "last time" above it.